

Data Online Service System at Japan Oceanographic Data Center through the Internet



Norio BABA

Japan oceanographic Data Center

5-3-1 Tsukiji Chuo-ku, Tokyo 104-0045, Japan
Tel; +81-3-3541-4295, Fax; +81-3-3545-2885

<http://www.jodc.go.jp/>

In order to improve the user's availability on the JODC service, we started to develop **the JODC Online Data Service System (J-DOSS)** in 1994. By the development of J-DOSS, the user is able to check and retrieve the JODC managed data which each one wants through the Internet from their office directly, and the user need not wait for a long days to get the data from JODC like the old days.

We have continuously improved J-DOSS since its development. Presently, the data and information types provided by J-DOSS are counted 18 items as shown in the following table;

The present data and information types provided by J-DOSS

OCEANOGRAPHY
<ul style="list-style-type: none"> Serial Station Data CTD Data BT Data Statistics Values of Temperature in 1 Degree Mesh size Statistics Values of Salinity in 1 Degree Mesh size Ocean Surface Current Data Shipboard ADCP Data Statistics Values of Ocean Current in 1 Degree Mesh size Sea Level Data Statistics Values of Sea Level Data Moored Current Meter Data
GEOPHYSICS
<ul style="list-style-type: none"> Gridded Sea Depth around Japan
BIOLOGY
<ul style="list-style-type: none"> Marine Organisms Data
INFORMATION
<ul style="list-style-type: none"> National Oceanographic Program Cruise Summary Report Information on Instrument fixed on Seabed IOC Documents Oceanographic Abbreviation

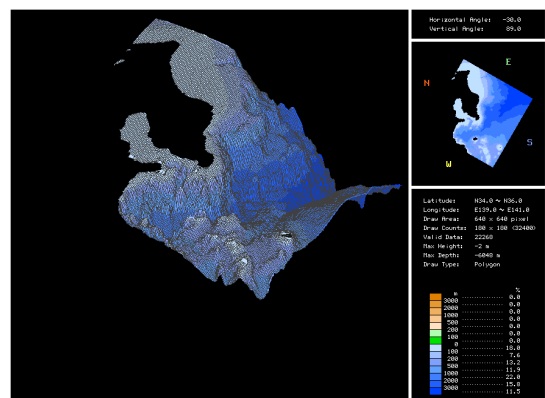
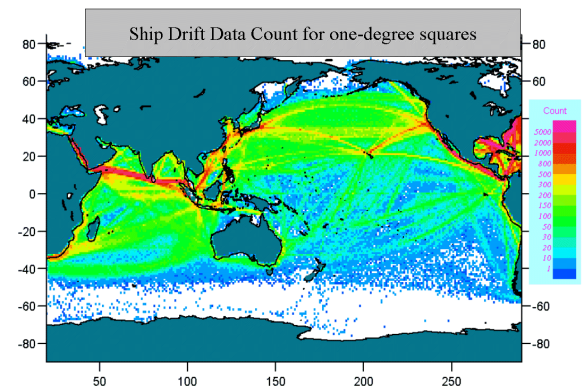
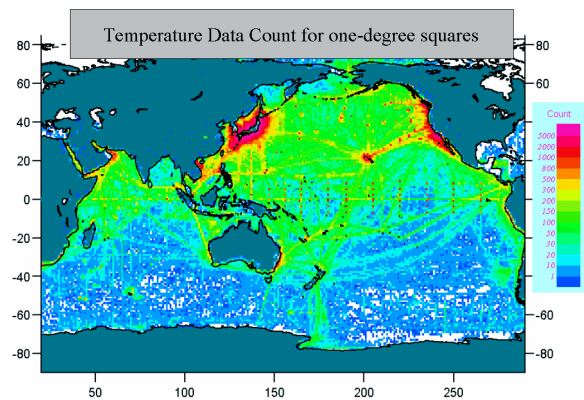
Some major data types of J-DOSS are introduced here. 3 million profiles of serial station data and 12 million of current data from the late 19th Century to the present in the world are available from J-DOSS as shown in the right top and middle figures respectively. In J-DOSS, a reference result can be interactively checked on a screen; especially Gridded Sea Depth data can check a reference result as a bird's-eye view as shown the right bottom figure.

The user is able to select a compressed type to reduce the file volume to download the data. We have improved the hardware of J-DOSS as well as the functions and data types in J-DOSS to meet the user's need. When J-DOSS started, the Internet line was only 64kbps. In 1996, the Internet line was improved to 1.5Mbps, and we up-grade the line to 6Mbps on August in 2001.

J-DOSS is opened every user in the world in accordance the principle of **the International Oceanographic Data &**

Information Exchange (IODE) system promoted by the Intergovernmental Oceanographic Commission (IOC) / UNESCO to enhance research & development activities in the ocean by facilitating the exchange of oceanographic data & information between member states.

The data provided by J-DOSS is data gathered from the researchers of each county through the IODE system. So, we will appreciate your kindly understanding and contribution for the IODE system.



Bird's Eye View of Gridded Sea Depth Data